

DANE COUNTY PUBLIC LAND SURVEY MONUMENT RECORD

This record shall show the location of the corner and shall include all of the following nine elements (a through j).

(a) CORNER LOCATION

SECTION NUMBER: 6

TOWNSHIP 6 NORTH, RANGE 10 EAST

DANE COUNTY COORDINATES

NORTHING: 457205.91'

EASTING: 831392.62'

HORIZONTAL DATUM & ADJUSTMENT: NAD 83 (2011)

ORTHOMETRIC HEIGHT: 876.44' VERTICAL DATUM: NAVD 88

MARK CORNER LOCATION

(b) Describe any record evidence, monument evidence, occupational evidence, testimonial evidence or any other material evidence you considered, and whether the monument was found or placed.

I found a concrete monument with a brass cap in a water box at this corner per Monument Record Sheet by Bruce Frudden, Glen Northrop and Keith Notbohm. I believe the 48" white oak is one of the original witness trees. The existing concrete monument with a brass cap has been used for numerous surveys and plats in the area in the past. To avoid chaos in the area it was necessary to accept the concrete monument as the corner and disregard the location that I had computed from the original bearing tree. The bearing and distance from the existing concrete monument to the location that I computed from the original bearing tree bears S82°40'49"W, 5.16'. Measured distances north and south to 1/4 corners match Marcy's record distances closely.

(c) CORNER LOCATION SKETCH: In the sketch, provide reference ties to at least 4 witness monuments of lasting durable material.

(d) The sketch shall include physical features surrounding the monument location sufficient to easily find the monument when in the general area, such as but not limited to utility poles, signs, trees, edges of forests or cropland, field lanes, water bodies, pavement, buildings, etc. Sketch shall also indicate north and scale, and include descriptions of symbols, in sketch or by legend.

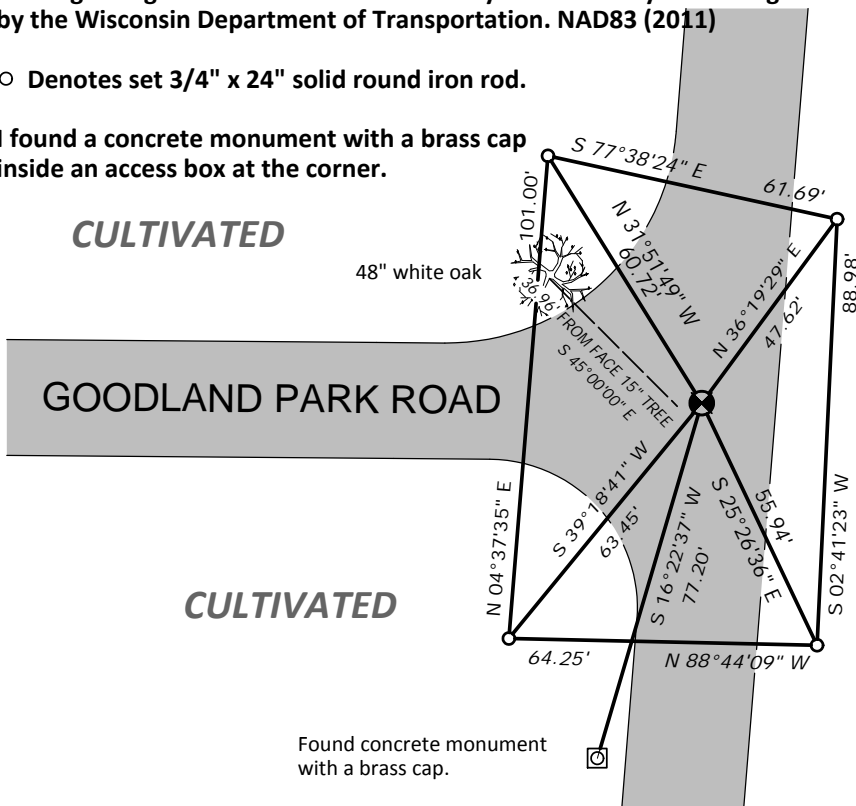
Bearings are grid based on the Dane County coordinate system designed by the Wisconsin Department of Transportation. NAD83 (2011)

Scale: 1" = 40'



○ Denotes set 3/4" x 24" solid round iron rod.

I found a concrete monument with a brass cap inside an access box at the corner.



N04°30'42"E 2589.24' to east 1/4 corner of Section 6.
Marcy Record = 2593'

Center of 48" white oak
Original bearing tree
(N45W, 0.56 CHS. 36.96')
457231.86'
831360.89'

Corner from tree
457205.25'
831387.50'

CULTIVATED

LAKE FARM ROAD

S02°54'38"W 2656.85' to west 1/4 corner of Section 7.
Marcy Record = 2656.17'

Found concrete monument with a brass cap.

