

# DANE COUNTY PUBLIC LAND SURVEY MONUMENT RECORD

This record shall show the location of the corner and shall include all of the following nine elements (a through j).

**(a) CORNER LOCATION**

SECTION NUMBER: 6

TOWNSHIP 6 NORTH, RANGE 10 EAST

DANE COUNTY COORDINATES

NORTHING: 462259.28'

EASTING: 826231.01'

HORIZONTAL DATUM & ADJUSTMENT: NAD 83 (2011)

ORTHOMETRIC HEIGHT: 882.94' VERTICAL DATUM: NAVD 88

**MARK CORNER LOCATION**

<input checked="" type="checkbox"/>			

**(b) Describe any record evidence, monument evidence, occupational evidence, testimonial evidence or any other material evidence you considered, and whether the monument was found or placed.**

I found a concrete monument with a brass cap per Monument Record Sheet by Bruce Frudden, Glen Northrop and Richard Zach. We located the monument and a few days later the corner and water box were destroyed by paving work. After the pavement work was done, I set a survey spike with washer in place of the concrete monument with a brass cap.

**(c) CORNER LOCATION SKETCH:** In the sketch, provide reference ties to at least 4 witness monuments of lasting durable material.

**(d) The sketch shall include physical features surrounding the monument location sufficient to easily find the monument when in the general area, such as but not limited to utility poles, signs, trees, edges of forests or cropland, field lanes, water bodies, pavement, buildings, etc. Sketch shall also indicate north and scale, and include descriptions of symbols, in sketch or by legend.**

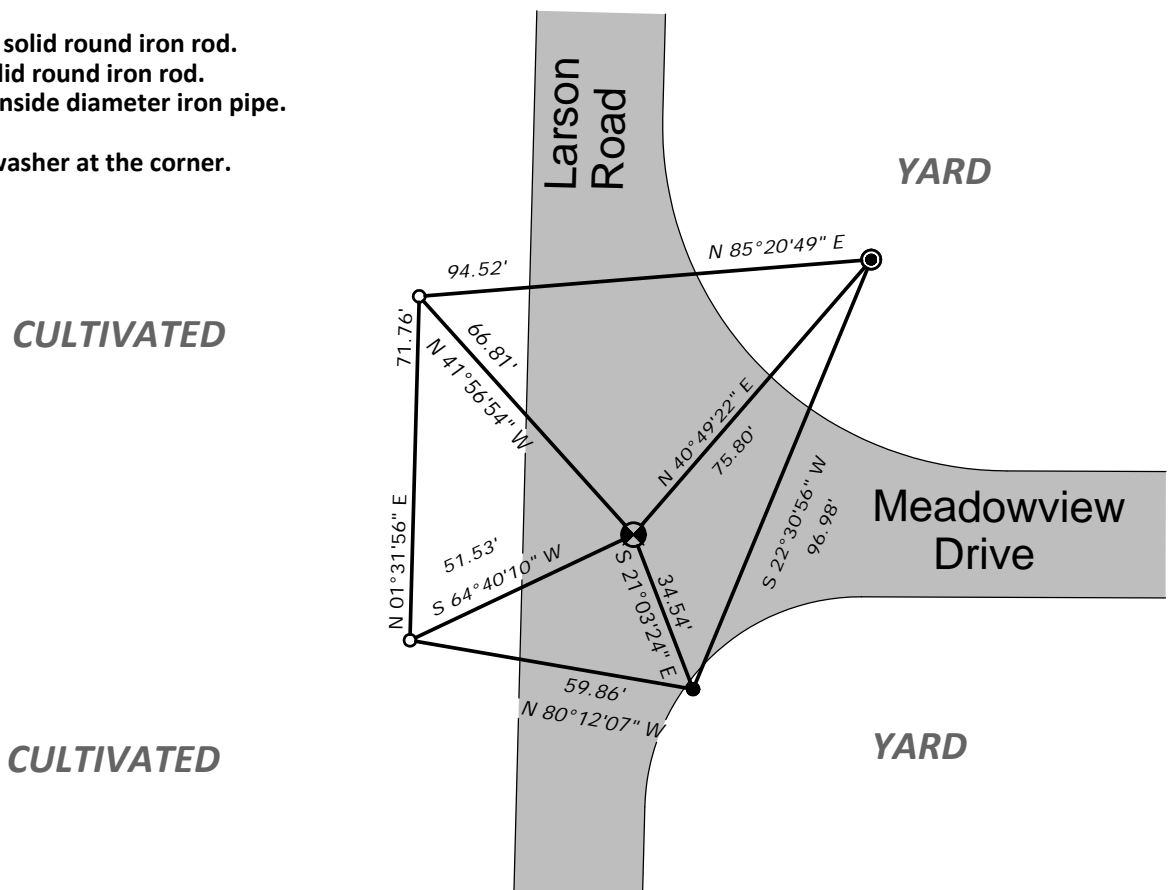
Bearings are grid based on the Dane County coordinate system designed by the Wisconsin Department of Transportation. NAD83 (2011)

Scale: 1" = 40'



- Denotes set 3/4" x 24" solid round iron rod.
- Denotes found 5/8" solid round iron rod.
- ⊙ Denotes found 1 1/4" inside diameter iron pipe.

I set a survey spike with washer at the corner.



(e) Describe any material discrepancy between the location of the corner as restored or reestablished and the location of that corner as previously restored or reestablished by distance and direction. Show the discrepancy in the sketch on sheet 1.

None

(f) Was the corner restored through acceptance of (1) an obliterated evidence location, or (2) a found perpetuated location?

(2) a found perpetuated location

(g&h) Was the corner reestablished through proportionate methods? If so, show the method, including the directions and distances to other public land survey corners used as evidence or used for proportioning in determining the corner location.

No

(i) List all previous Monument Records found, previously filed for the subject corner, including monument types set or found, surveyor, and date of survey.

- On January 11, 1855, W.M. Hough was at this corner while working in Section 6.

Bluebook Surveys volume 1, page 181.

- On January 13, 1855, W.M. Hough was at this corner while working in Section 31, T7N, R10E.

Bluebook Surveys volume 1, page 183.

- On January 19, 1870, L.P. Drake was at this corner while working in Section 6.

Bluebook Surveys volume 5, page 228.

- On May 13, 1898, W.L. Marcy, while working in Section 31, T10N, R6E, not finding positive evidence of the roots of the U.S. bearing tree for the southwest corner of Section 31, restored the corner on line between the east 1/4 corner and southwest corner of Section 1, T6N, R9E. A stone was found at each corner agreeing with Douglas bearing trees and roots of U.S. bearing trees. W.L. Marcy set a 14" x 8" x 8" stone at the corner and two witness trees. He shows the corner 23.14 chains (1527.24') south of the east 1/4 corner of Section 1, T6N, R9E and 16.85 chains (1112.10') north of the southeast corner of Section 1, T6N, R9E. Bluebook Surveys volume 1, page 183.

- On May 6, 1965, Bruce O. Frudden set a concrete monument with a brass cap at the intersection of the north line of Meadowview Plat and the east line of the SE1/4 of Section 1, T6N, R9E which is also the centerline of Clayton Road and Meadowview Drive. Monument Record Sheet.

- On April 18, 1985, Glen Northrop found a concrete monument with a bass cap in a water box at the corner. Monument Record Sheet.

- On April 19 1984, Richard Zach found a concrete monument with a bass cap in a water box at the corner. Monument Record Sheet.

(j) I, Richard Marks, Professional Land Surveyor number S-1473 hereby certify that the corner location shown on this record was determined by me or under my direction and is correct. This U.S. Public Land Survey Monument Record is complete to the best of my knowledge and belief.

 9/28/2014

Richard Marks

Date

Professional Land Surveyor number S-1473

Affix Land Surveyor seal



CORNER IDENTIFICATION NUMBER 40610064040