

DANE COUNTY PUBLIC LAND SURVEY MONUMENT RECORD

This record shall show the location of the corner and shall include all of the following nine elements (a through j).

(a) CORNER LOCATION

SECTION NUMBER: 20

TOWNSHIP 6 NORTH, RANGE 10 EAST

DANE COUNTY COORDINATES

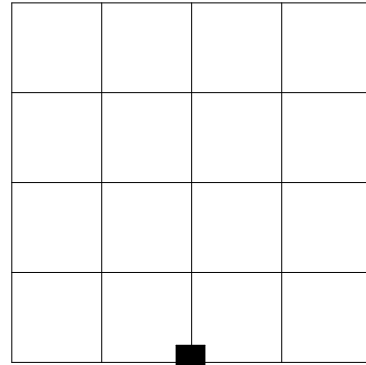
NORTHING: 441369.00'

EASTING: 833572.14'

HORIZONTAL DATUM & ADJUSTMENT: NAD 83 (2011)

ORTHOMETRIC HEIGHT: 970.25' VERTICAL DATUM: NAVD 88

MARK CORNER LOCATION



(b) Describe any record evidence, monument evidence, occupational evidence, testimonial evidence or any other material evidence you considered, and whether the monument was found or placed.

I found a deteriorated aluminum monument at this corner as per Monument Record Sheet by William Karns. I patched the pavement and set a survey spike with washer at the corner.

(c) CORNER LOCATION SKETCH: In the sketch, provide reference ties to at least 4 witness monuments of lasting durable material.

(d) The sketch shall include physical features surrounding the monument location sufficient to easily find the monument when in the general area, such as but not limited to utility poles, signs, trees, edges of forests or cropland, field lanes, water bodies, pavement, buildings, etc. Sketch shall also indicate north and scale, and include descriptions of symbols, in sketch or by legend.

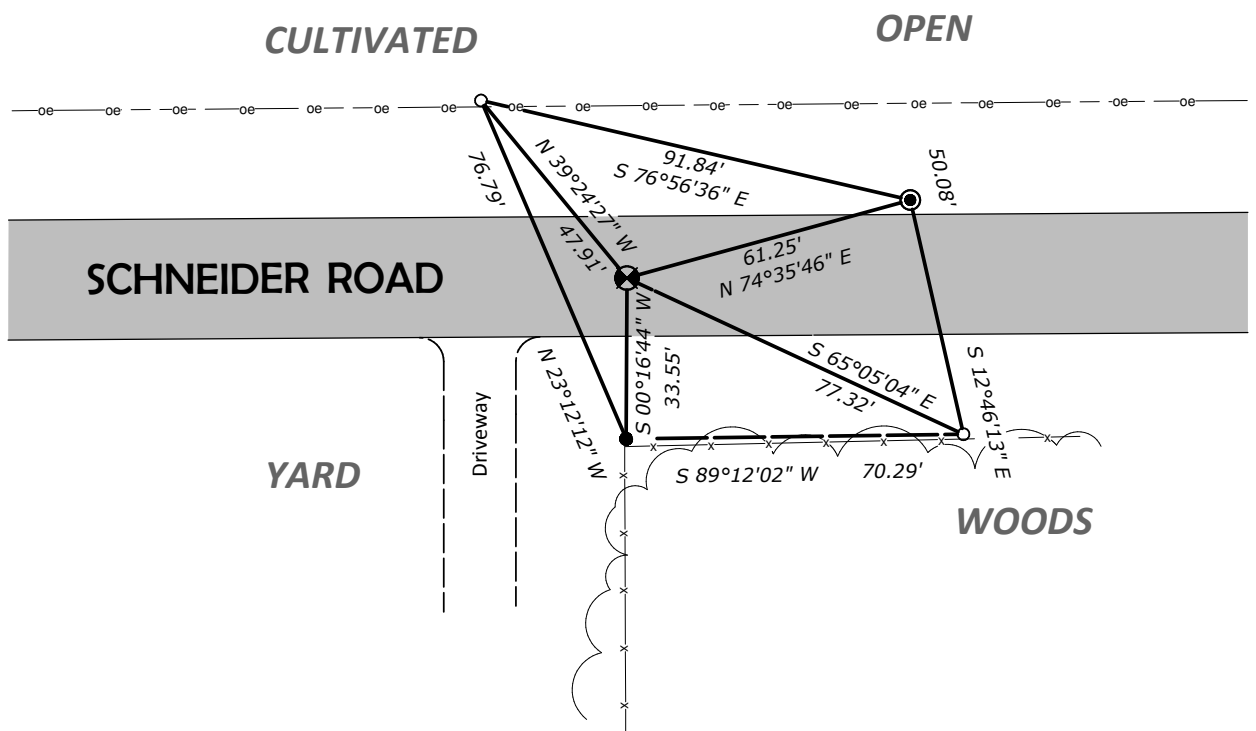
Bearings are grid based on the Dane County coordinate system designed by the Wisconsin Department of Transportation. NAD83 (2011)

Scale: 1" = 40'



- Denotes set 3/4" x 24" solid round iron rod.
- Denotes found 3/4" solid round iron rod.
- ⊙ Denotes found 1" inside diameter iron pipe.

I found a deteriorated aluminum monument and set a survey spike with washer at the corner.



CORNER IDENTIFICATION NUMBER 40610200020

(e) Describe any material discrepancy between the location of the corner as restored or reestablished and the location of that corner as previously restored or reestablished by distance and direction. Show the discrepancy in the sketch on sheet 1.

None

(f) Was the corner restored through acceptance of (1) an obliterated evidence location, or (2) a found perpetuated location?

(2) a found perpetuated location

(g&h) Was the corner reestablished through proportionate methods? If so, show the method, including the directions and distances to other public land survey corners used as evidence or used for proportioning in determining the corner location.

No

(i) List all previous Monument Records found, previously filed for the subject corner, including monument types set or found, surveyor, and date of survey.

- On April 13, 1870, L.P. Drake was at this corner while working in Section 21. Bluebook Surveys volume 5, page 258.
- On September 27, 1910, P.H. Hintze found the south 1/4 corner and set a sandstone 8" x 8" x 12" with a cross while working in Section 20. Bluebook Surveys volume 5, page 256.
- On August 6, 1908, P.H. Hintze found the north 1/4 corner by the northwest bearing tree and set a chisel and two new bearing trees while working in Section 28. Bluebook Surveys volume 5, page 270.
- On April 24, 1919, P.H. Hintze and W.L. Marcy found the chisel by bearing trees and stump of white oak U.S. bearing tree S59°W, 523.8' (80 links) while working in Section 28. Bluebook Surveys volume 5, page 270.
- William Karns set an aluminum monument with no explanation or date. Monument Record Sheet.
- On August 5, 1985, George Weir found an aluminum monument. Monument Record Sheet.

(j) I, Richard Marks, Professional Land Surveyor number S-1473 hereby certify that the corner location shown on this record was determined by me or under my direction and is correct. This U.S. Public Land Survey Monument Record is complete to the best of my knowledge and belief.

Richard W. Marks 9/28/2014

Richard Marks Date
Professional Land Surveyor number S-1473

Affix Land Surveyor seal



CORNER IDENTIFICATION NUMBER 40610200020