

DANE COUNTY PUBLIC LAND SURVEY MONUMENT RECORD

This record shall show the location of the corner and shall include all of the following nine elements (a through j).

(a) CORNER LOCATION

SECTION NUMBER: 21
 TOWNSHIP 6 NORTH, RANGE 10 EAST
 DANE COUNTY COORDINATES
 NORTHING: 441453.70'
 EASTING: 841524.18'
 HORIZONTAL DATUM & ADJUSTMENT: NAD 83 (2011)
 ORTHOMETRIC HEIGHT: 894.64' VERTICAL DATUM: NAVD 88

MARK CORNER LOCATION

(b) Describe any record evidence, monument evidence, occupational evidence, testimonial evidence or any other material evidence you considered, and whether the monument was found or placed.

I found an aluminum monument at this corner as per Monument Record Sheet by William Karns.

(c) CORNER LOCATION SKETCH: In the sketch, provide reference ties to at least 4 witness monuments of lasting durable material.

(d) The sketch shall include physical features surrounding the monument location sufficient to easily find the monument when in the general area, such as but not limited to utility poles, signs, trees, edges of forests or cropland, field lanes, water bodies, pavement, buildings, etc. Sketch shall also indicate north and scale, and include descriptions of symbols, in sketch or by legend.

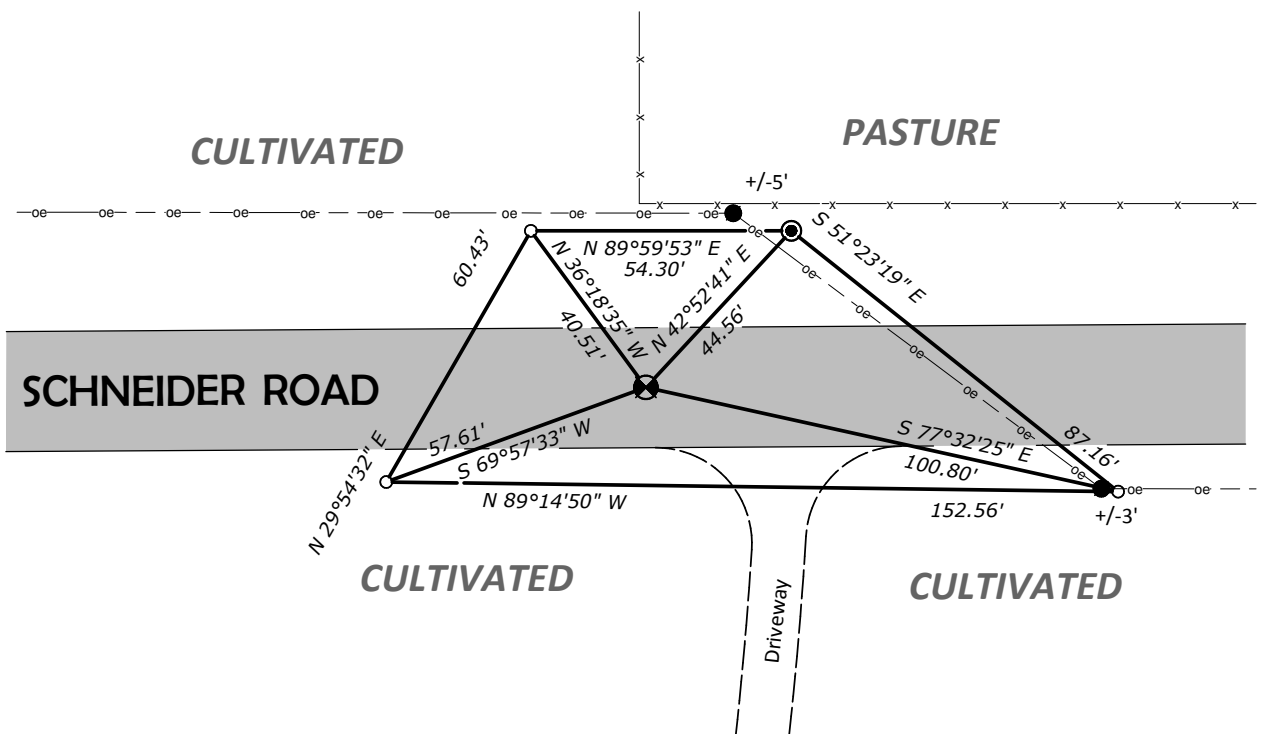
Bearings are grid based on the Dane County coordinate system designed by the Wisconsin Department of Transportation. NAD83 (2011)

Scale: 1" = 40'



- Denotes set 3/4" x 24" solid round iron rod.
- Denotes found 1" inside diameter iron pipe.

I found an aluminum monument at the corner.



CORNER IDENTIFICATION NUMBER 4061021000

