

DANE COUNTY PUBLIC LAND SURVEY MONUMENT RECORD

This record shall show the location of the corner and shall include all of the following nine elements (a through j).

(a) CORNER LOCATION

SECTION NUMBER: 22
 TOWNSHIP 6 NORTH, RANGE 10 EAST
 DANE COUNTY COORDINATES
 NORTHING: 444236.53'
 EASTING: 846930.13'
 HORIZONTAL DATUM & ADJUSTMENT: NAD 83 (2011)
 ORTHOMETRIC HEIGHT: 906.69' VERTICAL DATUM: NAVD 88

MARK CORNER LOCATION

			■

(b) Describe any record evidence, monument evidence, occupational evidence, testimonial evidence or any other material evidence you considered, and whether the monument was found or placed.

I found a survey spike at this corner as per Monument Record Sheet by John Norwell.

(c) CORNER LOCATION SKETCH: In the sketch, provide reference ties to at least 4 witness monuments of lasting durable material.

(d) The sketch shall include physical features surrounding the monument location sufficient to easily find the monument when in the general area, such as but not limited to utility poles, signs, trees, edges of forests or cropland, field lanes, water bodies, pavement, buildings, etc. Sketch shall also indicate north and scale, and include descriptions of symbols, in sketch or by legend.

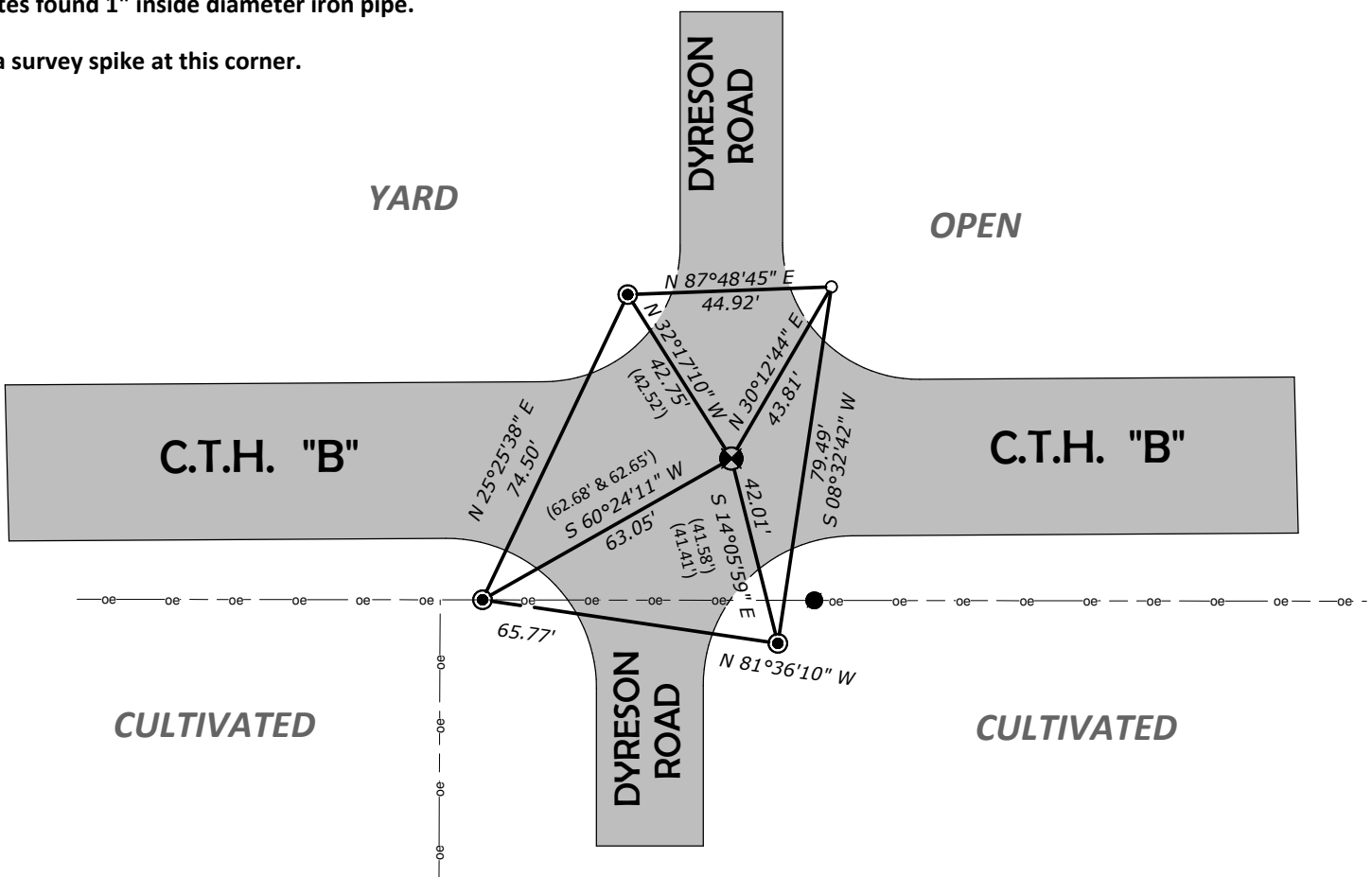
Bearings are grid based on the Dane County coordinate system designed by the Wisconsin Department of Transportation. NAD83 (2011)

Scale: 1" = 40'



- Denotes set 3/4" x 24" solid round iron rod.
- Denotes found 1" inside diameter iron pipe.

I found a survey spike at this corner.



(e) Describe any material discrepancy between the location of the corner as restored or reestablished and the location of that corner as previously restored or reestablished by distance and direction. Show the discrepancy in the sketch on sheet 1.

None

(f) Was the corner restored through acceptance of (1) an obliterated evidence location, or (2) a found perpetuated location?

(2) a found perpetuated location

(g&h) Was the corner reestablished through proportionate methods? If so, show the method, including the directions and distances to other public land survey corners used as evidence or used for proportioning in determining the corner location.

No

(i) List all previous Monument Records found, previously filed for the subject corner, including monument types set or found, surveyor, and date of survey.

-On March 14, 1857, William M. Hough set a post in mound at equal distance between the north, south east and west quarter corners. Bluebook Surveys volume 2, page 125.

- On November 23, 1973, William Karns set an aluminum monument after a study of a survey to the northwest. Ely map 4265 (apparent 100' bust on land tie). Monument Record Sheet.

- On January 25, 1988 George Weir found an aluminum monument. Monument Record Sheet.

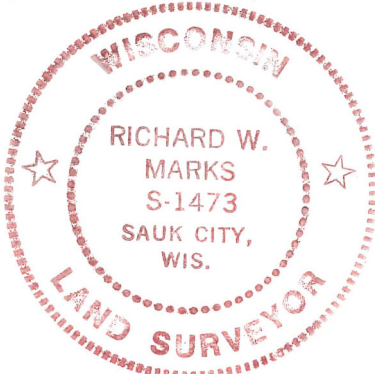
- John Norwell found an aluminum monument at this corner prior to construction and on November 15, 2000 he set a 2 3/4" survey nail with a 1" diameter head stamped "Survey Mark". Monument Record Sheet.

(j) I, Richard Marks, Professional Land Surveyor number S-1473 hereby certify that the corner location shown on this record was determined by me or under my direction and is correct. This U.S. Public Land Survey Monument Record is complete to the best of my knowledge and belief.

Richard Marks 9/28/2014

Richard Marks Date
Professional Land Surveyor number S-1473

Affix Land Surveyor seal



CORNER IDENTIFICATION NUMBER 4061022000