

DANE COUNTY PUBLIC LAND SURVEY MONUMENT RECORD

This record shall show the location of the corner and shall include all of the following nine elements (a through j).

(a) CORNER LOCATION

SECTION NUMBER: 33

TOWNSHIP 6 NORTH, RANGE 10 EAST

DANE COUNTY COORDINATES

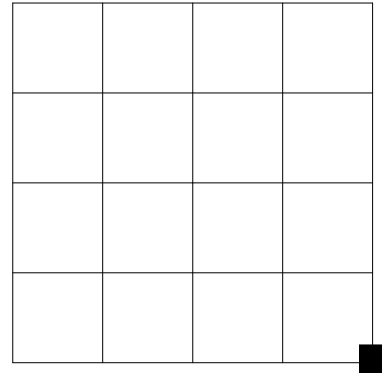
NORTHING: 430784.67'

EASTING: 841284.32'

HORIZONTAL DATUM & ADJUSTMENT: NAD 83 (2011)

ORTHOMETRIC HEIGHT: 906.92' VERTICAL DATUM: NAVD 88

MARK CORNER LOCATION



(b) Describe any record evidence, monument evidence, occupational evidence, testimonial evidence or any other material evidence you considered, and whether the monument was found or placed.

I found an aluminum monument at this corner as per Monument Record Sheet by Gregory Held.

(c) CORNER LOCATION SKETCH: In the sketch, provide reference ties to at least 4 witness monuments of lasting durable material.

(d) The sketch shall include physical features surrounding the monument location sufficient to easily find the monument when in the general area, such as but not limited to utility poles, signs, trees, edges of forests or cropland, field lanes, water bodies, pavement, buildings, etc. Sketch shall also indicate north and scale, and include descriptions of symbols, in sketch or by legend.

Bearings are grid based on the Dane County coordinate system designed by the Wisconsin Department of Transportation. NAD83 (2011)

Scale: 1" = 40'

○ Denotes set 3/4" x 24" solid round iron rod.

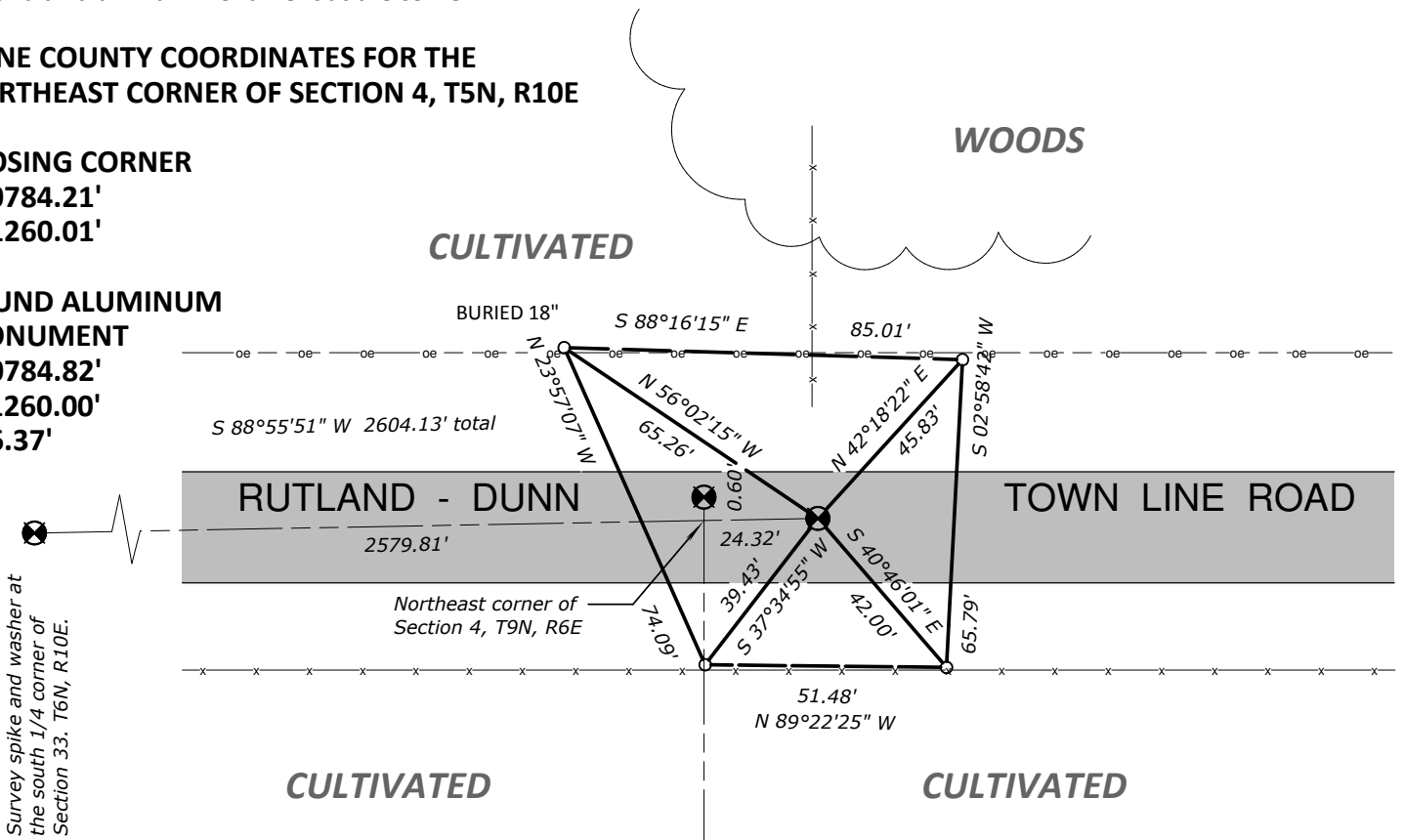


I found an aluminum monument at the corner.

DANE COUNTY COORDINATES FOR THE NORTHEAST CORNER OF SECTION 4, T5N, R10E

CLOSING CORNER
430784.21'
841260.01'

FOUND ALUMINUM MONUMENT
430784.82'
841260.00'
906.37'



CORNER IDENTIFICATION NUMBER 40610330000

(e) Describe any material discrepancy between the location of the corner as restored or reestablished and the location of that corner as previously restored or reestablished by distance and direction. Show the discrepancy in the sketch on sheet 1.

None

(f) Was the corner restored through acceptance of (1) an obliterated evidence location, or (2) a found perpetuated location?

(2) a found perpetuated location

(g&h) Was the corner reestablished through proportionate methods? If so, show the method, including the directions and distances to other public land survey corners used as evidence or used for proportioning in determining the corner location.

No

(i) List all previous Monument Records found, previously filed for the subject corner, including monument types set or found, surveyor, and date of survey.

- On November 28, 1860, A. Sigowski was at this corner while working in Section 34. Bluebook Surveys volume 2, page 401.
- On March 14th to 16th, 1878, James Melville found corner from stumps of bearing trees while working in Section 33. Bluebook Surveys volume 5, page 280.
- On September 7, 1973, Thom Grenlie set a 1" iron pipe by field evidence at twice the distance of monumented #17. Monument Record Sheet.
- On December 18, 1975, Gregory Held found a 1 1/4" iron pipe as per tie sheet dated September 7, 1973 and set a cast aluminum monument. Monument Record Sheet.
- On November 8, 1983, David Cheney found an aluminum monument. Monument Record Sheet.

(j) I, Richard Marks, Professional Land Surveyor number S-1473 hereby certify that the corner location shown on this record was determined by me or under my direction and is correct. This U.S. Public Land Survey Monument Record is complete to the best of my knowledge and belief.

Richard Marks 9/28/2014

Richard Marks Date
Professional Land Surveyor number S-1473

Affix Land Surveyor seal



CORNER IDENTIFICATION NUMBER 40610330000