

# DANE COUNTY PUBLIC LAND SURVEY MONUMENT RECORD

This record shall show the location of the corner and shall include all of the following nine elements (a through j).

**(a) CORNER LOCATION**

SECTION NUMBER: 33

TOWNSHIP 6 NORTH, RANGE 10 EAST

DANE COUNTY COORDINATES

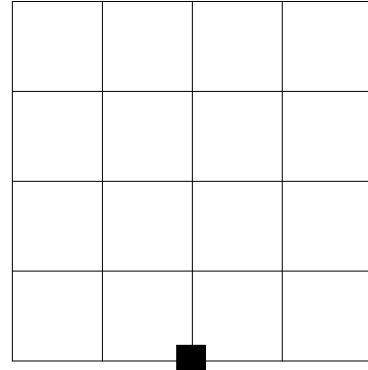
NORTHING: 430736.08'

EASTING: 838680.65'

HORIZONTAL DATUM & ADJUSTMENT: NAD 83 (2011)

ORTHOMETRIC HEIGHT: 962.66' VERTICAL DATUM: NAVD 88

**MARK CORNER LOCATION**



**(b) Describe any record evidence, monument evidence, occupational evidence, testimonial evidence or any other material evidence you considered, and whether the monument was found or placed.**

I found a deteriorated aluminum monument as per Monument Record Sheet by William Karns and set a survey spike with washer at the corner.

**(c) CORNER LOCATION SKETCH: In the sketch, provide reference ties to at least 4 witness monuments of lasting durable material.**

**(d) The sketch shall include physical features surrounding the monument location sufficient to easily find the monument when in the general area, such as but not limited to utility poles, signs, trees, edges of forests or cropland, field lanes, water bodies, pavement, buildings, etc. Sketch shall also indicate north and scale, and include descriptions of symbols, in sketch or by legend.**

Bearings are grid based on the Dane County coordinate system designed by the Wisconsin Department of Transportation. NAD83 (2011)

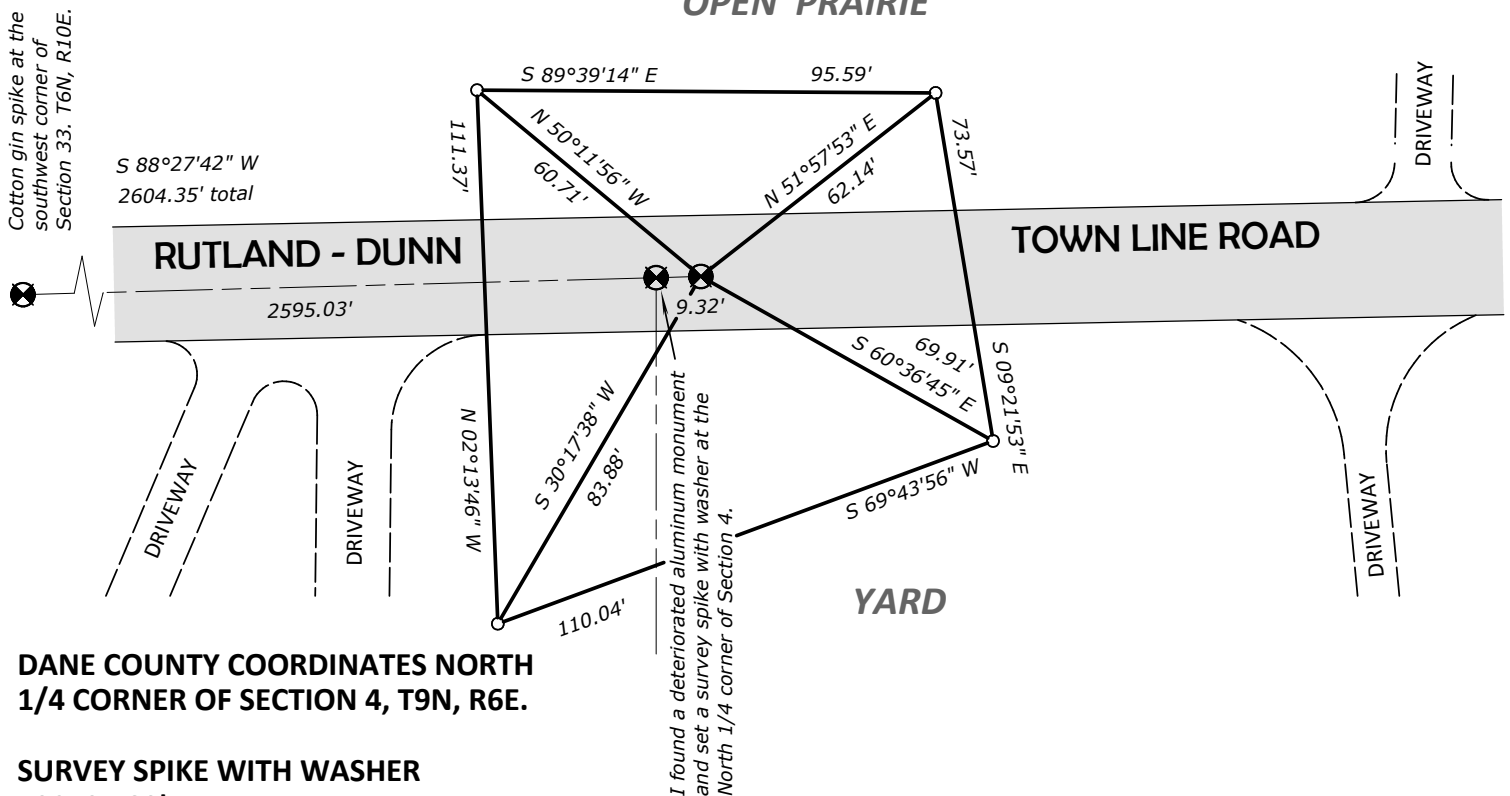
Scale: 1" = 40'

○ Denotes set 3/4" x 24" solid round iron rod.



I found a deteriorated aluminum monument and set a survey spike with washer at the corner.

**OPEN PRAIRIE**



**DANE COUNTY COORDINATES NORTH  
1/4 CORNER OF SECTION 4, T9N, R6E.**

**SURVEY SPIKE WITH WASHER  
430735.83'  
838671.33'**

**CORNER IDENTIFICATION NUMBER 40610330020**

