

DANE COUNTY PUBLIC LAND SURVEY MONUMENT RECORD

This record shall show the location of the corner and shall include all of the following nine elements (a through j).

(a) CORNER LOCATION

SECTION NUMBER: 36

TOWNSHIP 6 NORTH, RANGE 10 EAST

DANE COUNTY COORDINATES

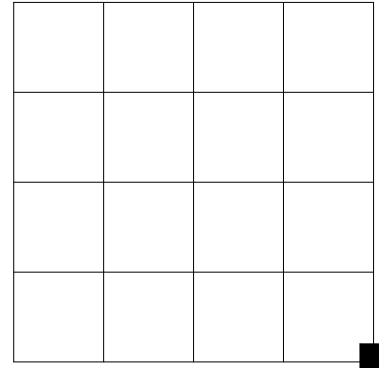
NORTHING: 430973.51'

EASTING: 857008.25'

HORIZONTAL DATUM & ADJUSTMENT: NAD 83 (2011)

ORTHOMETRIC HEIGHT: 931.06' VERTICAL DATUM: NAVD 88

MARK CORNER LOCATION



(b) Describe any record evidence, monument evidence, occupational evidence, testimonial evidence or any other material evidence you considered, and whether the monument was found or placed.

I found a brass cap in concrete at this corner. The corner is inside an access box. as per Monument Record Sheet by Richard Palmer.

(c) CORNER LOCATION SKETCH: In the sketch, provide reference ties to at least 4 witness monuments of lasting durable material.

(d) The sketch shall include physical features surrounding the monument location sufficient to easily find the monument when in the general area, such as but not limited to utility poles, signs, trees, edges of forests or cropland, field lanes, water bodies, pavement, buildings, etc. Sketch shall also indicate north and scale, and include descriptions of symbols, in sketch or by legend.

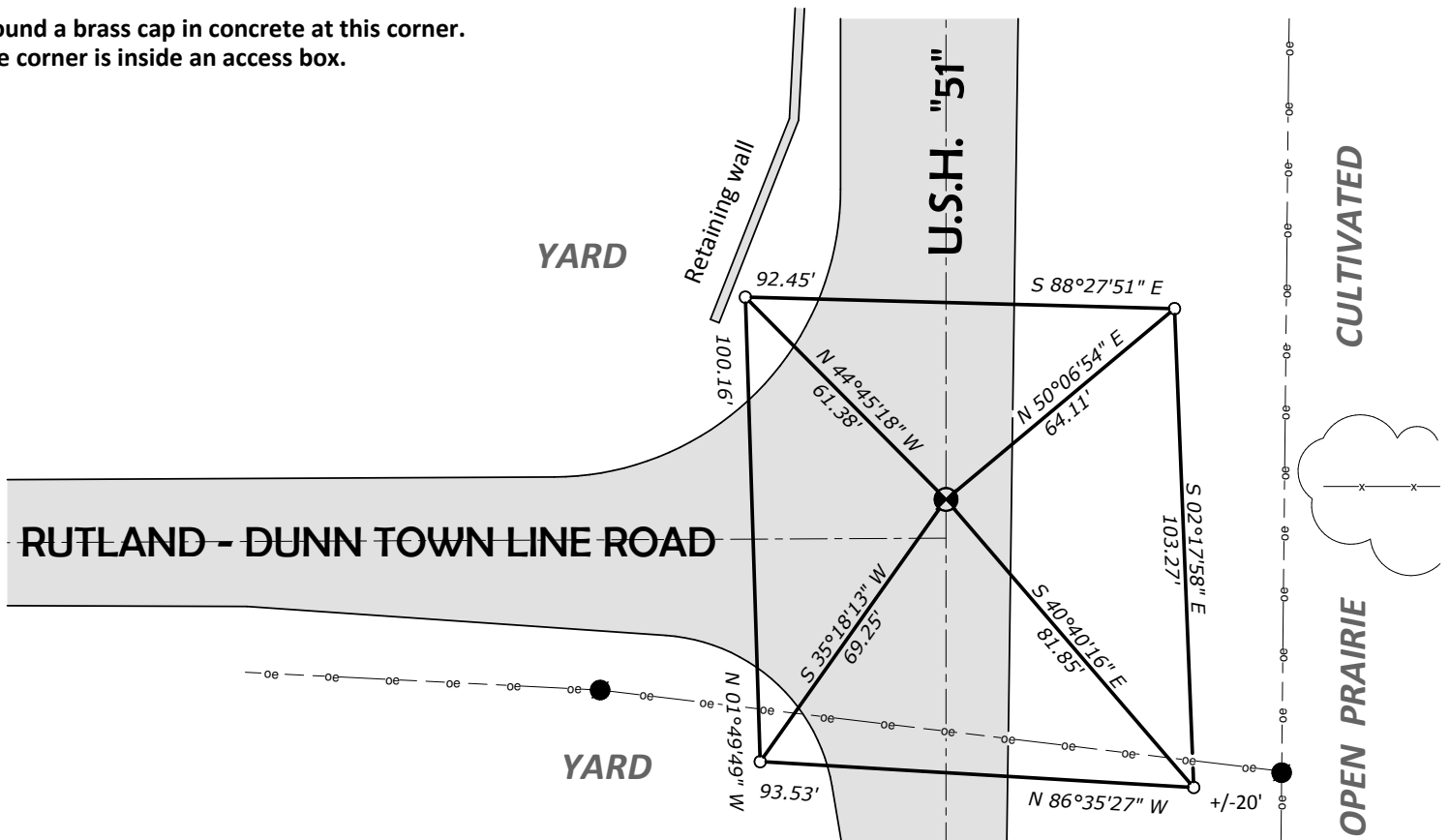
Bearings are grid based on the Dane County coordinate system designed by the Wisconsin Department of Transportation. NAD83 (2011)

Scale: 1" = 40'



○ Denotes set 3/4" x 24" solid round iron rod.

I found a brass cap in concrete at this corner.
The corner is inside an access box.



CORNER IDENTIFICATION NUMBER 4061036000

(e) Describe any material discrepancy between the location of the corner as restored or reestablished and the location of that corner as previously restored or reestablished by distance and direction. Show the discrepancy in the sketch on sheet 1.

None

(f) Was the corner restored through acceptance of (1) an obliterated evidence location, or (2) a found perpetuated location?

(2) a found perpetuated location

(g&h) Was the corner reestablished through proportionate methods? If so, show the method, including the directions and distances to other public land survey corners used as evidence or used for proportioning in determining the corner location?

No

(i) List all previous Monument Records found, previously filed for the subject corner, including monument types set or found, surveyor, and date of survey.

- On May 23, 1856, William M. Hough was at this corner while subdividing Section 36.

Bluebook surveys volume 2, page 27.

- On January 16, 1867, Charles Barton was at this corner while subdividing Section 36 and states that "Town corner stake stands". Bluebook surveys volume 5, page 286.

- On October 21, 1892, W.L. Marcy found a stone by digging which agrees with stump depression of U.S. bearing tree. Bluebook surveys volume 5, page 146.

- On February 1, 1918, P. H. Hintze and W.L. Marcy set a concrete monument from stone and bearing tree of Marcy survey. Resurvey of Township of Pleasant Springs.

- On June 26, 1965, Surveyor S-843 George Weir set a 1" iron pipe through use of Dane County Survey records. Monument Record Sheet

- On same tie sheet, note by Thom Grenlie shows a railroad spike too far north in April, 1972. Monument Record Sheet

- On June 3, 1974, William Karns found the existing railroad spike which corresponds to a tie sheet in the Dane County Surveyor's Office. He replaced the railroad spike with an aluminum monument. Monument Record Sheet

- On September 17, 1980, Thom Grenlie dug for the corner but did not find Hintze stone monument. He used the aluminum monument for the corner. Monument Record Sheet

- On May 30, 1989, Arden Sandsnes, found the corner and made a new tie sheet. Monument Record Sheet

- On February 1, 1994, Arden Sandsnes, found a D.O.T. brass cap monument 0.29' too far north. Monument Record Sheet

- On April 13, 2006, Richard Palmer found an aluminum monument fitting close to the tie distances shown on the previous tie sheet. Monument Record Sheet

(j) I, Richard Marks, Professional Land Surveyor number S-1473 hereby certify that the corner location shown on this record was determined by me or under my direction and is correct. This U.S. Public Land Survey Monument Record is correct complete to the best of my knowledge and belief.

 9/28/2014

Richard Marks

Date

Professional Land Surveyor number S-1473

Affix Land Surveyor seal



CORNER IDENTIFICATION NUMBER 40610360000