

DANE COUNTY PUBLIC LAND SURVEY MONUMENT RECORD

This record shall show the location of the corner and shall include all of the following nine elements (a through j).

(a) CORNER LOCATION

SECTION NUMBER: 20

TOWNSHIP 7 NORTH, RANGE 10 EAST

DANE COUNTY COORDINATES

NORTHING: 472887.05'

EASTING: 837060.31'

HORIZONTAL DATUM & ADJUSTMENT: NAD 83 (2011)

ORTHOMETRIC HEIGHT: 859.33' VERTICAL DATUM: NAVD 88

MARK CORNER LOCATION

(b) Describe any record evidence, monument evidence, occupational evidence, testimonial evidence or any other material evidence you considered, and whether the monument was found or placed.

I found the chiseled "X" in concrete as per Monument Reference Sheet by Michael Ziehr.

(c) CORNER LOCATION SKETCH: In the sketch, provide reference ties to at least 4 witness monuments of lasting durable material.

(d) The sketch shall include physical features surrounding the monument location sufficient to easily find the monument when in the general area, such as but not limited to utility poles, signs, trees, edges of forests or cropland, field lanes, water bodies, pavement, buildings, etc. Sketch shall also indicate north and scale, and include descriptions of symbols, in sketch or by legend.

Bearings are grid based on the Dane County coordinate system designed by the Wisconsin Department of Transportation. NAD83 (2011)

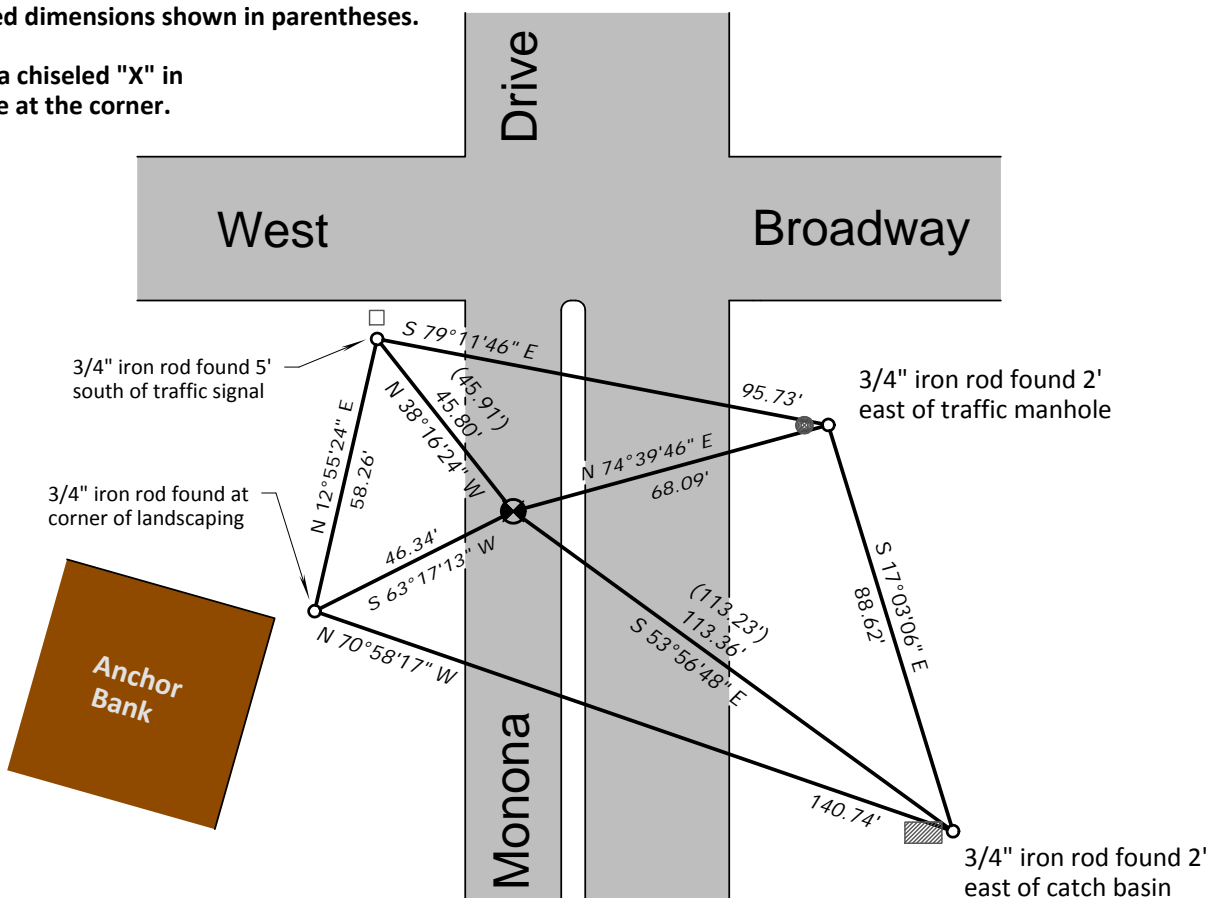
Scale: 1" = 40'

○ Denotes found 3/4" solid round iron rod.



Recorded dimensions shown in parentheses.

I found a chiseled "X" in concrete at the corner.



CORNER IDENTIFICATION NUMBER 4071020000

(e) Describe any material discrepancy between the location of the corner as restored or reestablished and the location of that corner as previously restored or reestablished by distance and direction. Show the discrepancy in the sketch on sheet 1.

None

(f) Was the corner restored through acceptance of (1) an obliterated evidence location, or (2) a found perpetuated location?

(2) a found perpetuated location

(g&h) Was the corner reestablished through proportionate methods? If so, show the method, including the directions and distances to other public land survey corners used as evidence or used for proportioning in determining the corner location.

No

(i) List all previous Monument Records found, previously filed for the subject corner, including monument types set or found, surveyor, and date of survey.

- On October 25, 1870, L.P. Drake was at this corner while working in Section 20.
- On September 25, 1964, Bruce Frudden set a City of Madison monument in a water box at a meander corner 88.00' north of the southeast corner of Section 20 from recorded plats in the area.
- On October 19, 1984, Donald Paulson found the City of Madison monument set by Frudden and established ties.
- On June 16, 2006, Michael Ziehr chiseled an "X" in concrete at the southeast corner of Section 20 per the plat of River Place and established ties.

(j) I, Richard Marks, Professional Land Surveyor number S-1473 hereby certify that the corner location shown on this record was determined by me or under my direction and is correct. This U.S. Public Land Survey Monument Record is complete to the best of my knowledge and belief.

 3/2/2015

Richard Marks Date
Professional Land Surveyor number S-1473

Affix Land Surveyor seal

